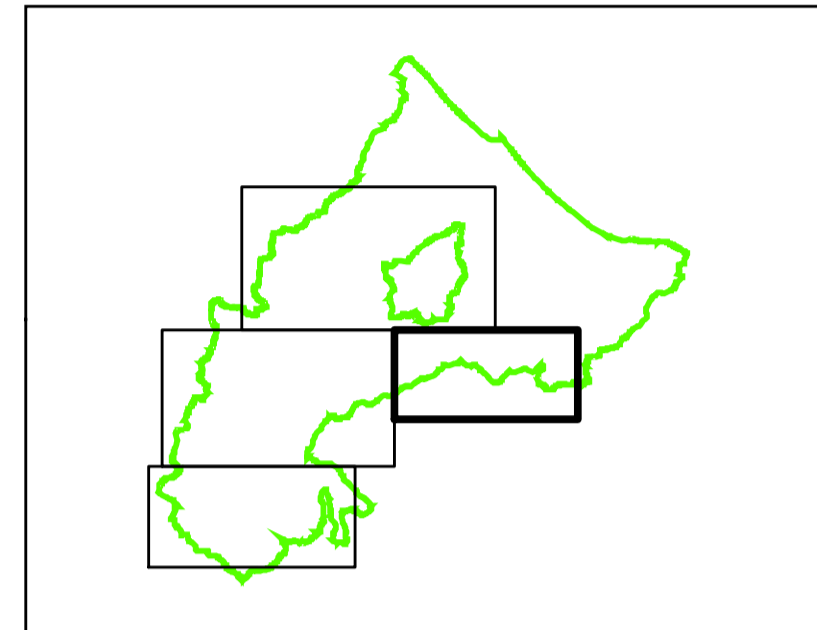


**Calanchi**



**TAVOLA 3.3**  
Scala 1 : 25.000

La Presidente dell'Autorità  
Interregionale  
di Bacino Marecchia - Conca

Paola Gazzolo

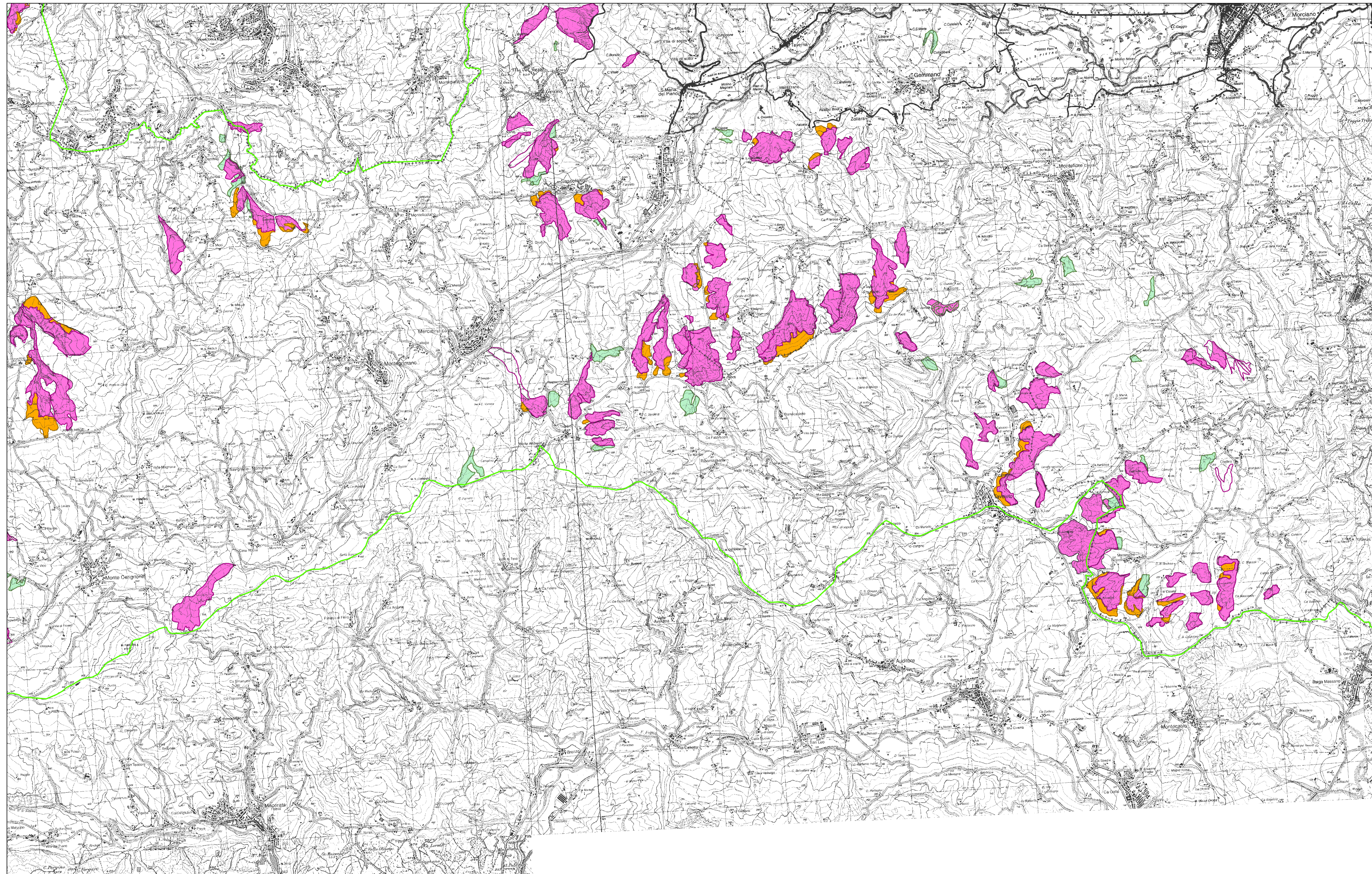
Il Segretario Generale  
dell'Autorità Interregionale  
di Bacino Marecchia - Conca

Gianfranco Giovagnoli







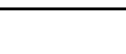
Redazione  
a cura dell'Autorità Interregionale  
di Bacino Marecchia - Conca

Segreteria Tecnico - Operativa

Aprile 2016



**Legenda**

-  Limite amministrativo dell'Autorità di Bacino
-  Calanchi tipici\_2011
-  Aree di possibile retrogressione\_2011
-  Pseudocalanchi\_2011
-  Calanchi tipici\_2016
-  Aree di possibile retrogressione\_2016
-  Pseudocalanchi\_2016